



# F203H / F233H

MODEL: F203H/F233H

## Spilt Body Flanged Ball Valve

Two-Piece Flanged Ball Valve Full Port Class 150/Class 300; PN16/PN40

### PRODUCT FEATURES

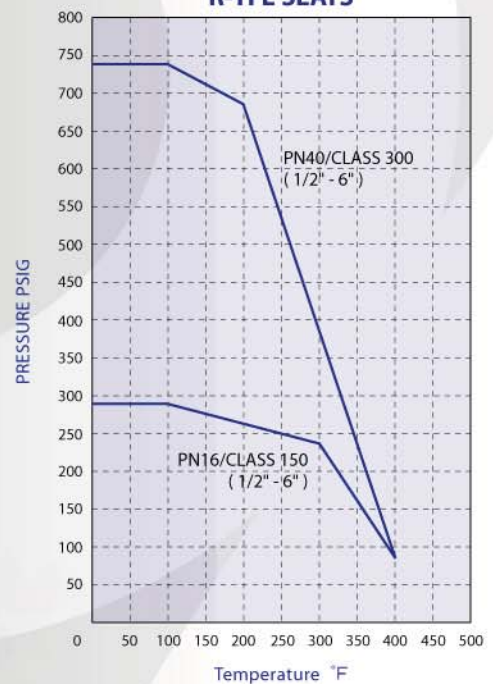
- Fully compliant to ASME B16.34 and API 608
- Fire-Test API 607 5th Edition & ISO 10497 Approval is certified by Lloyd's Register
- ISO 5211 actuator mounting pads & patented "Square Driver" stem design allow direct mounting of ISO operators without brackets and /or adaptors
- NACE MR-01-75 Revision 2003 compliant
- Adjustment with operators and actuators mounted
- Electrically grounded ball and stem
- Standard stainless locking handles
- Blow-Out Proof Stem

### SPECIFICATION

- Investment Cast Body or Sand Cast Body
- Pressure Rating:  
CF8M Class 150 275PSI WOG/ Class 300 720PSI WOG  
WCB Class 150 285 PSI WOG/Class 300 740PSI WOG
- Steam 150PSI (PTFE Seat)
- Size Available: 1/2" - 6"



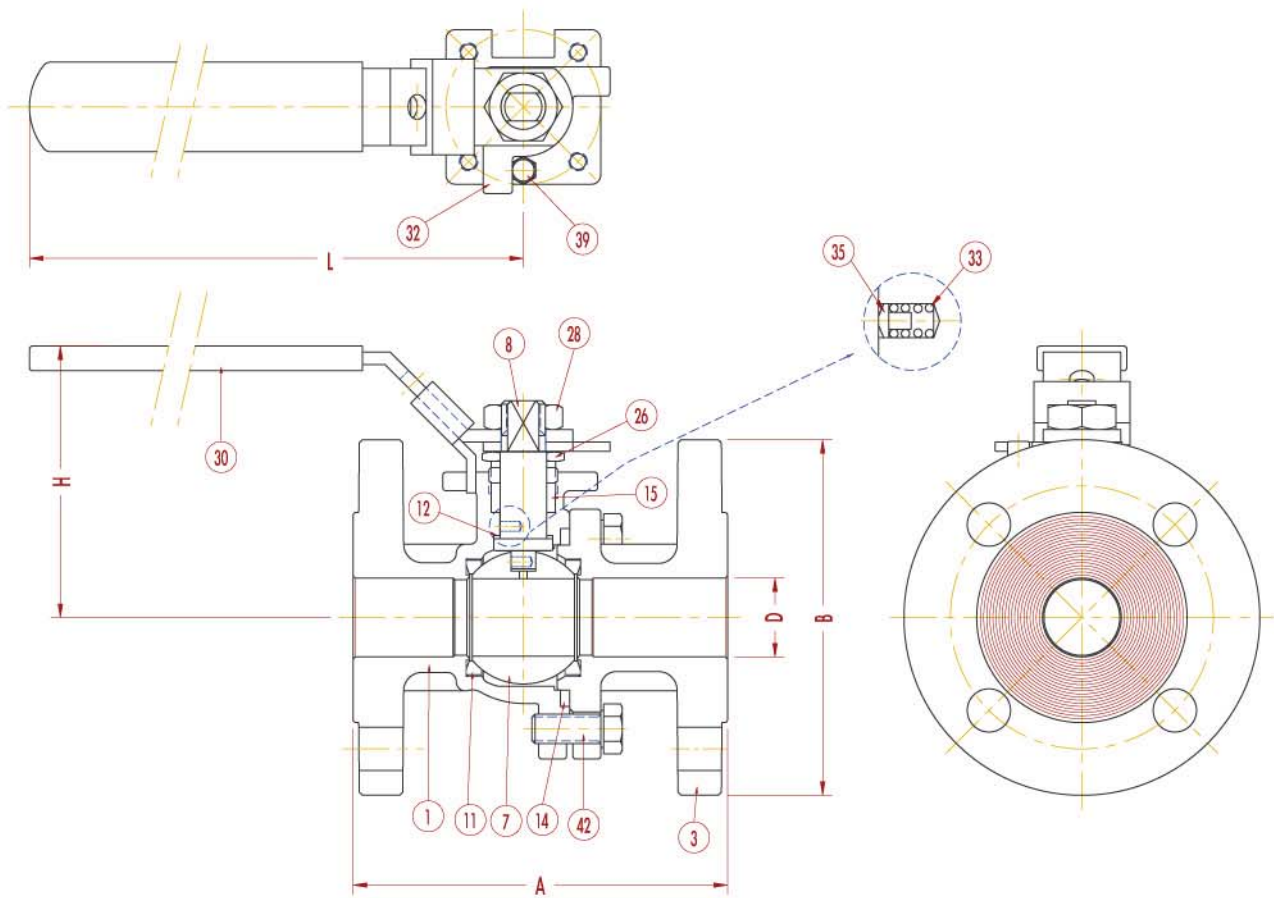
R-TFE SEATS



Keeping Safety  
with safe Valves

KSV valves offer positive solutions for all your flow-control applications

# F203H / F233H



## MATERIAL LIST

ITEM	QTY	PART NAME	F203H/F233H-1	F203H/F233H-3
1	1	BODY	EN-1.4408 A351-CF8M	EN-1.0619 A216-WCB
3	1	BODY CAP	EN-1.4408 A351-CF8M	EN-1.0619 A216-WCB
7	1	BALL	A351-CF8M	
8	1	STEM	316 SS	
11	2	SEAT	TFE/RTFE	
12	1	STEM SEAL	TFE/RTFE	
14	1	BODY SEAL	TFE/RTFE/304 SS+GRAPHITE	
15	1SET	STEM PACKING	TFE/ GRAPHITE	
26	1	GLAND	316 SS	
28	1	LOCK NUT	304 SS	
30	1	HANDLE	304 SS	
32	1	STOPPER PLATE	304 SS	
33	2	SPRING	304 SS	
35	2	PLUNGER	316 SS	
39	1	STOP PIN	304 SS	
42	1SET	CAP BOLT	A193-B8	A193-B7

## DIMENSIONS

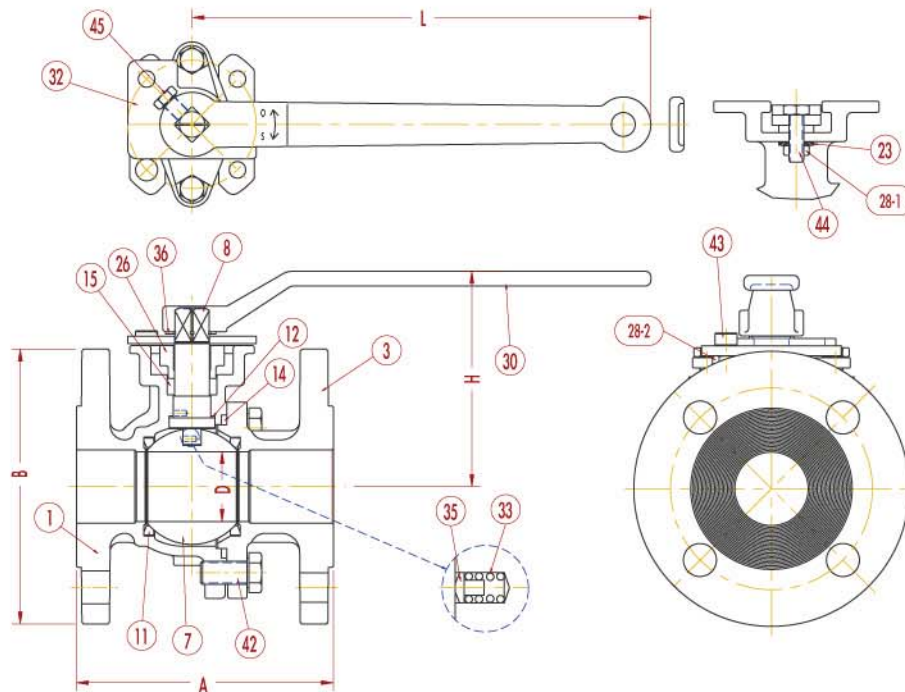
NPS DN	A				B				D	H	L
	PN16	PN40	150	300	PN16	PN40	150	300			
1/2"	4.37	4.53	4.25	5.50	3.74	3.74	3.50	3.75	0.55	2.78	5.17
15	111.00	115.00	108.00	139.70	95.00	95.00	89.00	95.25	14.00	70.50	131.40
3/4"	4.57	4.72	4.61	6.00	4.13	4.13	3.88	4.62	0.79	3.03	6.97
20	116.00	120.00	117.00	152.40	105.00	105.00	98.50	117.35	20.00	77.00	177.00
1"	4.76	4.92	5.00	6.50	4.53	4.53	4.25	4.88	0.96	3.46	7.76
25	121.00	125.00	127.00	165.10	115.00	115.00	108.00	123.95	24.50	87.80	197.00



**KONG SHENG VALVE IND., CO., LTD.**  
**KONG JIH VALVE IND., CO., LTD.**

Office.  
tel. 886-2-2823 9311 fax. 886-2-2823 9319  
Factory.  
tel. 886-4-2681 5268 fax. 886-4-2681 5788  
E-mail: marketing@ksvalve.com

# F203H / F233H



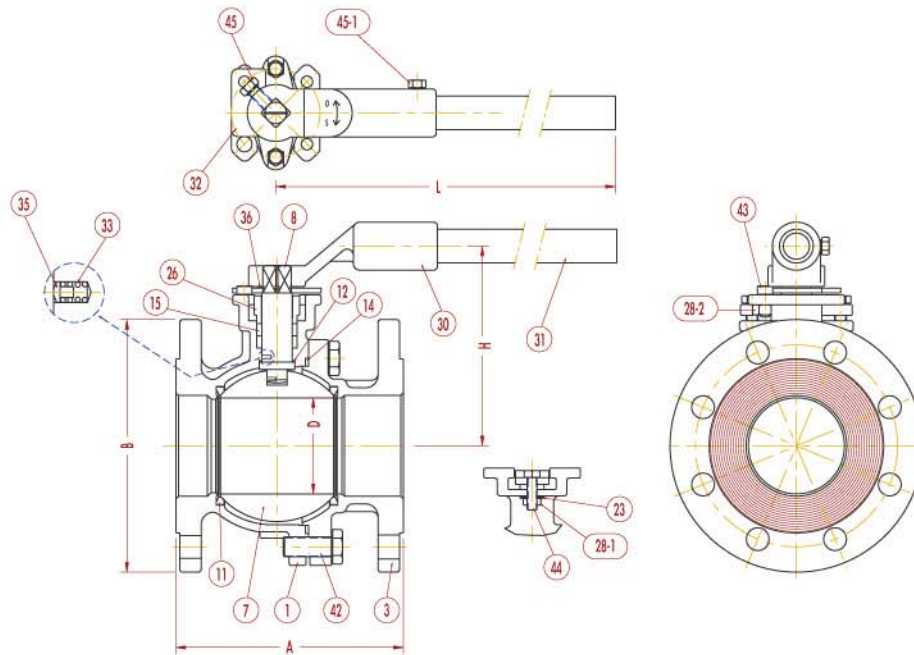
## MATERIAL LIST

ITEM	QTY	PART NAME	F203H/F233H-1	F203H/F233H-3
1	1	BODY	EN-1.4408 A351-CF8M	EN-1.0619 A216-WCB
3	1	BODY CAP	EN-1.4408 A351-CF8M	EN-1.0619 A216-WCB
7	1	BALL	A351-CF8M	
8	1	STEM	316 SS	
11	2	SEAT	TFE/RTFE	
12	1	STEM SEAL	TFE/RTFE	
14	1	BODY SEAL	TFE/RTFE /304 SS+GRAPHITE	
15	1	STEM PACKING	TFE/GRAPHITE	
23	4	BELL WASHER	SS	
26	1	GLAND	A351-CF8M	
28-1	2	GLAND NUT	304 SS	
28-2	1	NUT	304 SS	
30	1	HANDLE	A351-CF8	
32	1	STOPPER PLATE	304 SS	
33	2	SPRING	304 SS	
35	2	PLUNGER	316 SS	
36	1	SNAP RING	SS	
42	1SET	CAP BOLT	A193-B8	A193-B7
43	1	SCREW	304 SS	
44	2	GLAND BOLT	304 SS	
45	1	HANDLE BOLT	304 SS	

## DIMENSIONS

NPS DN	A				B				D	H	L
	PN16	PN40	150	300	PN16	PN40	150	300			
1-1/2"	5.51	5.51	6.50	7.50	5.91	5.91	5.00	6.12	1.50	4.62	9.84
40	140.00	140.00	165.00	190.50	150.00	150.00	127.00	155.45	38.10	117.40	250.00
2"	5.91	5.91	7.01	8.50	6.50	6.50	5.98	6.50	1.97	5.12	9.84
50	150.00	150.00	178.00	215.90	165.00	165.00	152.00	165.10	50.00	130.17	250.00

# F203H / F233H



## MATERIAL LIST

ITEM	QTY	PART NAME	F203H/F233H-1	F203H/F233H-3
1	1	BODY	EN-1.4408 A351-CF8M	EN-1.0619 A216-WCB
3	1	BODY CAP	EN-1.4408 A351-CF8M	EN-1.0619 A216-WCB
7	1	BALL	A351-CF8M	
8	1	STEM	316 SS	
11	2	SEAT	TFE/RTFE	
12	1	STEM SEAL	TFE/RTFE	
14	1	BODY SEAL	TFE/RTFE /304 SS+GRAPHITE	
15	1	STEM PACKING	TFE/GRAPHITE	
23	4	BELL WASHER	SS	
26	1	GLAND	A351-CF8M	
28-1	2	GLAND NUT	304 SS	
28-2	1	NUT	304 SS	
30	1	HANDLE	A351-CF8	
31	1	PIPE	A53	
32	1	STOPPER PLATE	304 SS	
33	2	SPRING	304 SS	
35	2	PLUNGER	316 SS	
36	1	SNAP RING	SS	
42	1SET	CAP BOLT	A193-B8	A193-B7
43	1	SCREW	304 SS	
44	2	GLAND BOLT	304 SS	
45	1	HANDLE BOLT	304 SS	
45-1	1	PIPE BOLT	304 SS	

## DIMENSIONS

NPS DN	A				B				D	H	L
	PN16	PN40	150	300	PN16	PN40	150	300			
2-1/2"	6.69	6.69	7.50	9.50	7.28	7.28	7.00	7.50	2.56	5.89	15.94
65	170.00	170.00	190.50	241.30	185.00	185.00	177.80	190.50	65.00	149.70	405.00
3"	7.09	7.09	7.99	11.12	7.87	7.87	7.50	8.25	2.99	79.10	15.94
80	180.00	180.00	203.00	282.45	200.00	200.00	190.50	209.55	76.00	158.20	405.00
4"	7.48	7.48	9.01	12.00	8.66	9.25	9.00	10.00	4.00	7.31	18.11
100	190.00	190.00	229.00	304.80	220.00	235.00	228.60	254.00	101.60	185.80	460.00
6"	13.78	13.78	15.50	15.88	11.22	11.22	11.00	12.50	5.98	9.55	24.61
150	350.00	350.00	393.70	403.35	285.00	285.00	279.00	317.50	152.00	242.50	610.00